

AMETHYST HOMES HOUSE TYPE A: THE ADDISON

All drawings are to be read in conjunction with specification.



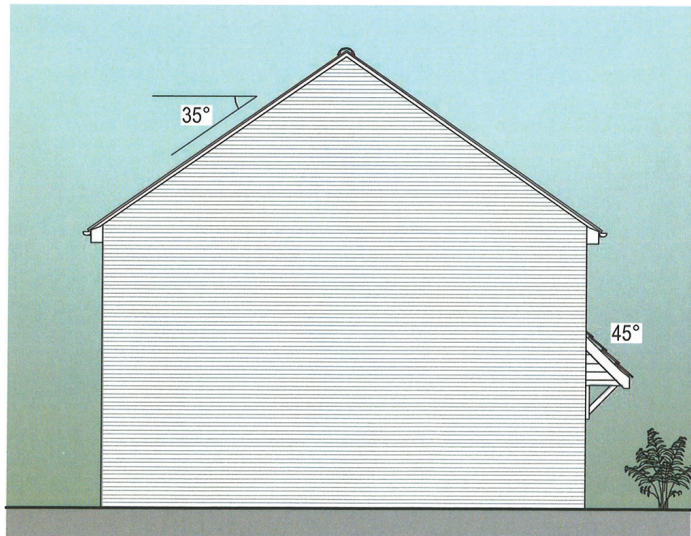
PROPERTY MISDESCRIPTIONS ACT 1991
(Warning to House Purchasers)
These drawings, and their contents, are for 'Construction' purposes only and may be subject to change at any time.
Alterations and Variations may occur during the construction process, and therefore the layout, form, content, and dimensions of the completed construction may vary from that shown on these drawings.
Every effort is made to constantly update the information shown however there may be situations of unavoidable delay due to changes in Statutory Regulations and/or re-planning. Purchasers are advised to check with the Sales Team to ascertain whether there have been any alterations to the printed information.



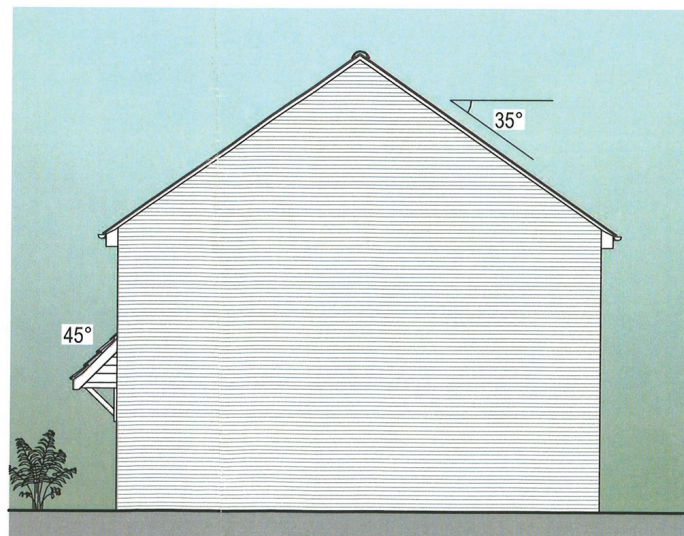
FRONT ELEVATION



REAR ELEVATION



SIDE ELEVATION



SIDE ELEVATION

PLANNING DRAWING - ELEVATIONS - 1-100 Scale @ A3

B	29.18.15	General drawing amendments to all House Types	DD
A	12.18.15	Opposite gable elevations shown.	TP

REV	DATE	DESCRIPTION	BY	CHK
B	29.18.15	General drawing amendments to all House Types	DD	
A	12.18.15	Opposite gable elevations shown.	TP	

MWE
Maudslayi Weightman & Elphick
Architects
Chartered Architects
Town Planning Consultants
Planning Supervisors
Project Managers

Herist House
12 Summerhill Terrace
Newcastle Upon Tyne
NE4 6EB
Telephone: (0191) 260 2299
Fax: (0191) 260 3340
Email: enquiries@mwearchitect.co.uk

Client
Amethyst Homes

Project
STANDARD HOUSE TYPES

Description HOUSE TYPE A: The Addison	
PLANNING - ELEVATIONS	
Project Ref: 12009	Dwg No: A-002
Scale: 1:100 @ A3	Rev: B
Date: November 2012	
Drawn by: TSP	
Checked by:	Date:

STOCKTON BOROUGH COUNCIL
PLANNING
30 NOV 2017
DATE RECEIVED

THIS DRAWING IS COPYRIGHT. CONTRACTORS MUST CHECK ALL DIMENSIONS ON SITE. ONLY FIGURED DIMENSIONS ARE TO BE WORKED FROM. DISCREPANCIES MUST BE REPORTED IMMEDIATELY TO THE ARCHITECTS BEFORE PROCEEDING.